

connecting you to health

phn
ADELAIDE

An Australian Government Initiative

Adelaide PHN will deliver significant improvements to the health services accessed by 1.3 million people across metropolitan Adelaide - from Sellicks Hill to Angle Vale.

Working closely with the broader Adelaide community and benefitting from the experience and knowledge of primary health providers, it's the job of the Adelaide PHN to ensure the health system better services peoples' real needs.

Adelaide PHN does not deliver health services itself, but commissions health services to address local needs guided by community, clinical and stakeholder input.

Specifically, the Adelaide PHN is tasked to:

- increase the efficiency and effectiveness of medical services for patients in its region, particularly those at risk of poor health outcomes; and
- improve coordination of care to ensure patients receive the right care in the right place at the right time.

Adelaide PHN is one of 31 PHNs now operating Australia-wide.

Established and funded by the Federal Government, the Adelaide PHN replaces three Medicare Locals - Southern Adelaide, Fleurieu, Kangaroo Island; Central Adelaide and Hills; and Northern Adelaide

COMMUNITY COLLABORATION

Adelaide PHN has been established with collaboration as a core part of its operational structure.

Thirteen membership groups have been created to provide clinical, community and stakeholder input, to help inform the organisation's decision making processes.

CLINICAL COUNCILS (3)

Based in the northern, central and southern Adelaide regions, these Clinical Councils comprise GPs, medical specialists, nurses, allied and community health professionals, and hospital representatives. These members will be regional champions for their communities.

COMMUNITY ADVISORY COUNCIL (3)

Community Advisory Council have been created to give local communities a voice. Also based in the northern, central and southern Adelaide regions, these Councils are open to any member of the local community (except for those currently employed in health and community services).

HEALTH PRIORITY GROUPS (7)

Health Priority Groups bring together health professionals, service providers and community members to provide input around specific health care issues and provide strategic input into the work of the Adelaide PHN. Health Priority Groups are able to raise and discuss relevant primary health care issues, and work together to advocate and identify solutions. Groups will be based on population health priority areas and are:

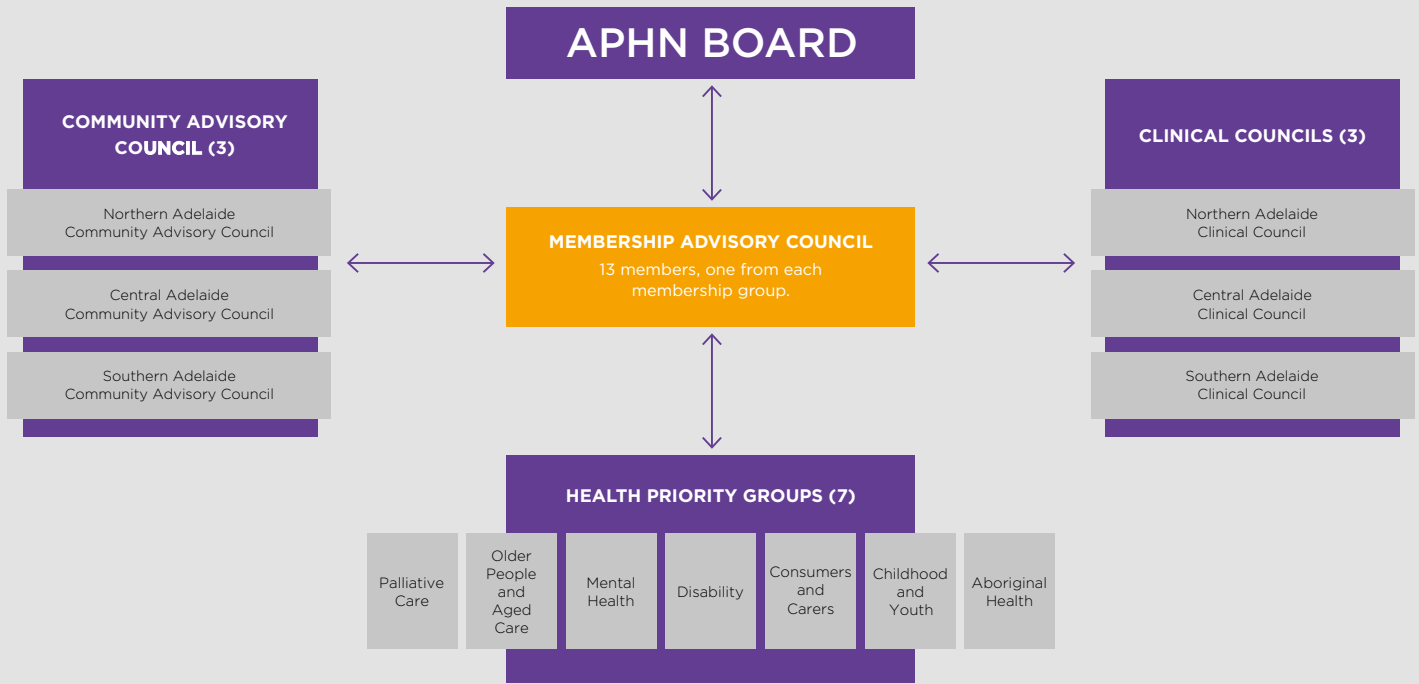
- Mental Health
- Aboriginal Health
- Consumers and Carers
- Disability
- Childhood and Youth
- Older People and Aged Care
- Palliative Care

MEMBERSHIP ADVISORY COUNCIL

Each of the 13 membership groups above provides one representative to the Membership Advisory Council. The Council acts as the conduit for all the membership groups and provides advice to the Adelaide PHN Board. The Council is guided by Adelaide PHN's national and local objectives and resources. A Board delegate also sits on the Council.

(See diagram overleaf for more details)

www.adelaidephn.com.au



OUR BOARD

- Dr Nick Vlachoulis** - Chair
- Dr Hendrika Meyer**
- Rick Albertini** - Finance Chair
- Wayne Oldfield**
- Dr Vikas Jasoria**
- Jill Davidson**
- Professor Paul Worley**
- Deb Lee** - Secretary

OUR TEAM

- Deb Lee** - Chief Executive Officer
- Andrea Powley** - Executive Assistant
- Sarah Murray** - Executive Manager Innovation and Design
- Malcolm Ellis** - Executive Manager Development and Commissioning
- Debbi Edwards** - Executive Manager Corporate Services
- Mathew Booy** - Executive Manager Digital Health
- Alison Smith** - Executive Manager Community Collaborations

CONTACT

Email: enquiry@adelaidephn.com.au
Postal: PO Box 313
 Torrensville Plaza SA 5031
Phone: 08 8219 5900
www.adelaidephn.com.au

@adelaidephn
 /adelaidephn

