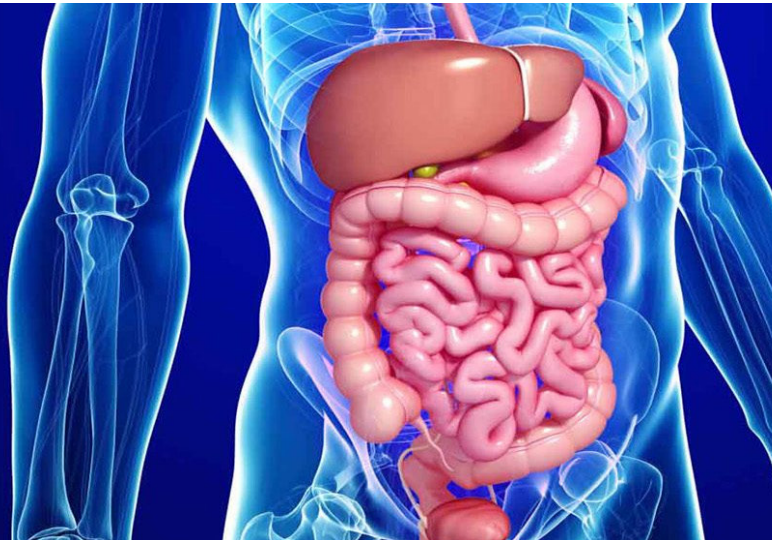


# Adelaide Gastroenterology Update for General Practice

FOR GPs & PRACTICE NURSES



## DATE & TIME

6.30 - 9.30pm  
Tuesday 26<sup>th</sup> June 2018

## VENUE

Lyell McEwin Hospital  
Lecture Theatre, Level 2  
Haydown Rd, Elizabeth Vale  
SA 5112

Light dinner provided  
No cost to attend

This session will provide an update on gastroenterology for general practice. The presenters will discuss the treatment and testing options available for fatty liver disease, changes to colorectal cancer screening and inflammatory bowel disease tests. The presenters will also cover treatment options for irritable bowel syndrome.

## LEARNING OUTCOMES

- Discuss the treatment and testing options available for fatty liver disease.
- Discuss the changes to colorectal cancer screening in 2018.
- Identify when to refer and what tests are useful for diagnosing inflammatory bowel disease.
- Discuss good treatment options for the growing epidemics of irritable bowel syndrome and eosinophilic oesophagitis.
- Learn more about gastroenterology services at Northern Adelaide Local Health Network.

## AGENDA

- 6.30pm – 7.00pm** Registration and light dinner
- 7.00pm – 7.15pm** GI services at NALHN - Presentation by Professor Rajvinder Singh
- 7.15pm – 7.30pm** Fatty Liver Disease: How to test, and can we treat?  
- Presentation by Dr Damian Harding
- 7.30pm – 7.45pm** Break & dessert
- 7.45pm – 8.00pm** Colorectal cancer screening in 2018 - Presentation by Dr Biju George
- 8.00pm – 8.15pm** Inflammatory Bowel Disease: When to refer, and what tests are useful?  
- Presentation by Dr Derrick Tee
- 8.15pm – 8.30pm** Irritable Bowel Syndrome and Eosinophilic Oesophagitis: Good treatment for the growing epidemics - Presentation by Dr Hamish Philpott
- 8.30pm – 9.00pm** Networking, evaluation and close



## PRESENTED BY

**Dr Hamish Philpott**  
Consultant Gastroenterologist  
Senior Clinical Lecturer  
University of Adelaide

**Dr Damian Harding**  
Consultant Gastroenterologist  
& Hepatologist  
Senior Clinical Lecturer  
University of Adelaide

**Professor Rajvinder Singh**  
Director of Gastroenterology,  
Lyell McEwin & Modbury Hospital

**Dr Biju George**  
Senior Consultant  
Lyell McEwin Hospital

**Dr Derrick Tee**  
Consultant Gastroenterologist  
Lyell McEwin Hospital



## REGISTRATIONS

Register online at  
[www.northernhealth.net/  
education-events](http://www.northernhealth.net/education-events)

by Thursday 21<sup>st</sup> June 2018



Point allocation is not guaranteed and is subject to review by the RACGP