

CONNECT

FEBRUARY 2018



phn
ADELAIDE

An Australian Government Initiative

ADELAIDE PHN IN ACTION

A Letter from the CEO	3
Invite to APHN Roadshow	4
Commissioning Matters	6
Access to Palliative Care	8
Two Exciting Online APHN Launches	10
Revitalising our Membership Model	12
Primary Mental Health Care Services	14
My Health Record: Introductions	16
Cancer Screening: An Update	19
GP Referral to LMH Orthopaedic	22

PRIMARY CARE IN ACTION

An Update on Immunisation	24
Closing the Gap	27
NDIS & Mental Health	28
NHMRC Study	31



2018 AND WE'RE HERE IN FULL SWING!

Happy New Year everyone. I sincerely hope you all had a fabulous Christmas with your family, friends and loved ones.

For us at the Adelaide PHN, 2018 is the year we focus strongly on collaboration and integration. We have a range of fantastic services in our community and we continue to work with them, capacity building, solving issues on the ground and collecting the very important data that shows us where we can make improvements for quality, effectiveness and efficiency. Keep watch on [TenderLink](#) (and register if you haven't already) for new opportunities to work with us to provide much needed services in our regions.

Alongside of all of this fabulous work, this year we are sharpening our focus on collaboration and integration. We all know that for the persons experience of the health system to truly improve, for better health outcomes to really be achieved and to genuinely support our primary health care providers - we need to work together. Whether that is sharing data, innovation, new strategies, case consultation or building and improving communities of practice, it's all very valuable work and this year that is our target - ensuring that all the services that we commission become truly collaborative and integrated. Providing the right care, in the right place, at the right time, seamless navigation of our "health system" and the sharing of information (of course, with consent) to ensure that no-one needs to tell their story more than once and that our health care providers have the information they need to provide the services that are needed.

Jump on and have a meander through our new

Integrated Care website aphnintegratedcare.com.au. This is the foundation stone of what we aim to achieve here at Adelaide PHN for all of our South Australian metropolitan communities. Our three flagship programs feature on this site and each one, and all together, are fantastic examples of truly Integrated Care. HealthPathways - a tri partnership with the Adelaide PHN, Country SA PHN and SA Heath; Health Care Homes - which is now in full swing enrolling patients and working very hard to implement a new model of care in general practice; and Care Connections - which is all about building those essential medical neighbourhoods - communities of practice.

The My Health Record expansion is a pivotal part of Integrated Care and provides the platform for that essential medical record sharing - clinical handover (referral and discharge) and controlled by the person. More information will be coming soon about the "opt out expansion" and what you need to know, either as a provider or as a community member (or of course, both!).

As promised, we are hitting the road again, around our regions with our 2018 Roadshows. These events will update our communities about what we have done, how to access services and ask 'what else do we need to know?'. We warmly welcome individual community members to these events - so please spread the word!

As always, don't hesitate to contact us, [online](#), by phone or in person by dropping in at our Mile End office - we will do what we can to assist and welcome your input!

Warm regards
Deb

2018 ADELAIDE PHN ROADSHOW



**You are
invited to:**

CONTINUE THE CONVERSATION

Stakeholders and members of the community are invited to an Adelaide PHN update, with a showcase of the initiatives and services put in place by the APHN over the past two years.

- Hear a snap-shot of Adelaide's current primary health needs
- Get an understanding of how you can contribute

For the past two years Adelaide PHN has been working with you to improve the primary health system which cares for 1.2 million people across the metropolitan region.

Presentations will include information on:

- Digital Health and My Health Record
- Mental Health
- Aboriginal health
- Person-Centred Care
- Commissioned Services

A light lunch/dinner will be provided.

SOUTHERN ROADSHOW **Thursday 15 March**

Cove Civic Centre

1 Ragamuffin Drive, Hallett Cove 5158

Day Session 11.00am - 1.30pm

Night Session 6.00pm - 8.30pm

[Register here](#)

CENTRAL ROADSHOW **Tuesday 20 March**

Thebarton Community Centre

South Rd & Ashwin Pde, Torrensville 5031

Day Session 11.00am - 1.30pm

[Register here](#)

NORTHERN ROADSHOW **Tuesday 27 March**

Playford Civic Centre

10 Playford Blvd, Elizabeth 5112

Day Session 11.00am - 1.30pm

Night Session 6.00pm - 8.30pm

[Register here](#)

COMMISSIONING MATTERS

The Cultural Learning for Primary Health Care Providers Program

There has been strong interest in the *Cultural Learning for Primary Health Care Providers Program: An Introduction to Cultural Safety Request for Proposal (RFP)* which closed on February 8 2018.

This Program aims to improve health outcomes and address access barriers to primary health care services for Aboriginal and Torres Strait Islander people through improved access to culturally appropriate and safe primary care services.

The Lived Experience Telephone Support Service

Adelaide PHN has issued a Request for Tender (RFT) for eligible service providers to apply to operate the *Lived Experience Telephone Support Service (LETSS)*.

The LETSS is a peer-led telephone service (in the hours of 5.00pm - 11.30pm seven days per week including public holidays) where people with mental health issues and their carers can receive real-time information, navigation and support. As a component of the Adelaide PHN After Hours Primary Mental Health Service strategy, the LETSS will assist in the reduction of inappropriate attendances at emergency departments and be proactive in the de-escalation of mental health distress. It will also assist with access to mainstream in-hours mental health services and other services as required.

This RFP closes February 28 2018.

For further information please visit our [commissioning page](#) and review the [guidelines](#).

Organisations that wish to apply for Adelaide PHN tenders, and receive tender notifications must register on the e-Procurement system. Organisations already registered via TenderLink are reminded to regularly check and update their contact details.

- To register, please visit www.tenderlink.com/adelaidephn
- For registration support please call Tenderlink on 1800 233 533

STATUS OF RECENTLY CLOSED COMMISSIONING OPPORTUNITIES

Adelaide Refugees & New Arrivals Project

Status: Preferred provider contract negotiation

headspace Onkaparinga

Status: Preferred provider contract negotiation

Aboriginal & Torres Strait Islander Community Peer Support for Cancer Screening Project

Status: Preferred provider contract negotiation

Extended Primary Care for People Residing in Residential Aged Care Facilities (EPC4RACF) Project

Status: Preferred provider contract negotiation

Palliative Care Access to Medicines (PCAM) Project

Status: Initial applications assessment



WE'RE CURRENTLY COMMISSIONING

LIVED EXPERIENCE TELEPHONE SUPPORT SERVICE

phn
ADELAIDE
An Australian Government Initiative

ACCESS TO AFTER HOURS PALLIATIVE CARE

Adelaide PHN hosts a successful After-hours Palliative Care in the Community Network Event.

On February 6, Adelaide PHN held a forum with over 50 passionate stakeholders to explore the processes which support end-of-life care in the community. The forum demonstrated that it is possible, with good planning, to experience quality end-of-life care in the community.

The idea for this forum came from the members of the *Older People* and *Palliative Care* Health Priority Groups and clearly hit the mark, generating plenty of questions and discussion. The format for the event included an interactive case study presented by Dr Chris Moy, followed by a panel discussion facilitated by Adelaide PHN.

It was great to see so many of the key stakeholders represented on the day, consumers, service providers, and peak bodies. It was the sharing of their expert knowledge and experience that enabled such great conversations and helped each of us to better understand our part in planning for and supporting good access to palliative care in the community.

The case study followed the story of a 78 year old man - Bill - who is dying. Bill lives at home with his wife, Mavis. The case study followed Bill and Mavis through the last days of Bill's life, and presented a range of typical needs and activities involving their son, various health care providers, and an after-hours locum service. This case study highlighted the importance of timely communication between family members, GPs and pharmacists, the family and paramedics, and the after-hours locum service. Timely communication and careful planning were the key activities ensuring:

- Bill's end-of-life treatment and care wishes were documented and followed
- His substitute decision maker was identified
- Bill had access to the medicines he needed to be comfortable and free from pain; and
- Bill's family knew how to access support after-hours when they needed it



After the case study, a panel of leading experts from General Practice, Aged and Community Services, Palliative Care SA, SA Health, Anglicare and the Pharmaceutical Society of Australia explored some of the perennial challenges facing the sector.

This panel covered the big issues of workforce; community readiness; building doctor / pharmacist relationships and future plans for supporting quality palliative care in the community.

Are you interested in joining an Adelaide PHN Health Priority Network? Our Networks are open to everyone - health care providers and community members. To register your interest in one or more of the priority areas of the Network, email healthprioritynetwork@adelaidephn.com.au

2 EXCITING ONLINE LAUNCHES

Adelaide PHN has launched not one but two online websites recently; the first regarding our approach to integrated care, and the second a service-orientated website for GPs and patients seeking access to one-off psychiatric assessments.

GP-PASA WEBSITE

Accessing timely and affordable psychiatric advice to inform treatment and care planning has previously been a challenge for GPs and patients. GP-PASA is a unique South Australian service assisting GPs and patients with accessing one-off psychiatric assessments provided under MBS Item Number 291.

On February 3 - we launched the GP-PASA website. Whilst the service now has a new online home, GP-PASA is not a new service. In 2017, a review of GP-PASA was carried out by the Royal Australian and New Zealand College of Psychiatrists and Adelaide PHN to improve and enhance the service. The results of this enhancement have been incorporated into the current GP-PASA model and the creation of this new website.

VISIT THE
WEBSITE

We invite you to explore the website and learn more about the service...

www.gppasa.net.au

INTEGRATED CARE WEBSITE

On January 15, our new Integrated Care website went live online. This website details our approach to implementing Integrated Care across the Adelaide region and serves to describe our three flagship Integrated Care focussed programs: HealthPathways South Australia, Care Connections, and Health Care Homes.

VISIT THE
WEBSITE

We invite you to explore the website and learn more about our approach and these exciting programs...

www.aphnintegratedcare.com.au



THE INTEGRATED CARE ANIMATION

The first thing visitors to our new Adelaide PHN Integrated Care website will notice is the unique animation on the home page. When visiting our new website, be sure to take a peek at the 'Our Animation' section via the About tab; this page details the rationale behind the animation on the front page.

Created by collaboration, between local animator Jason Pamment, Bliss Web Agency, and us at the Adelaide PHN, this animation is a visually representation of our vision for a more integrated approach to medical care across the Adelaide region. The animation also serves to conceptualise the Patient-Centred Medical Home and Local Medical Neighbourhood.

Those looking closely at the animation itself will notice local Adelaide icons such as the Gumeracha Rocking Horse and Mount Lofty Summit!

Visit the website - aphnintegratedcare.com.au - to see the animation for yourself or jump straight to the 'Our Animation' section of the website [here](#).

REVITALISING OUR MEMBERSHIP MODEL

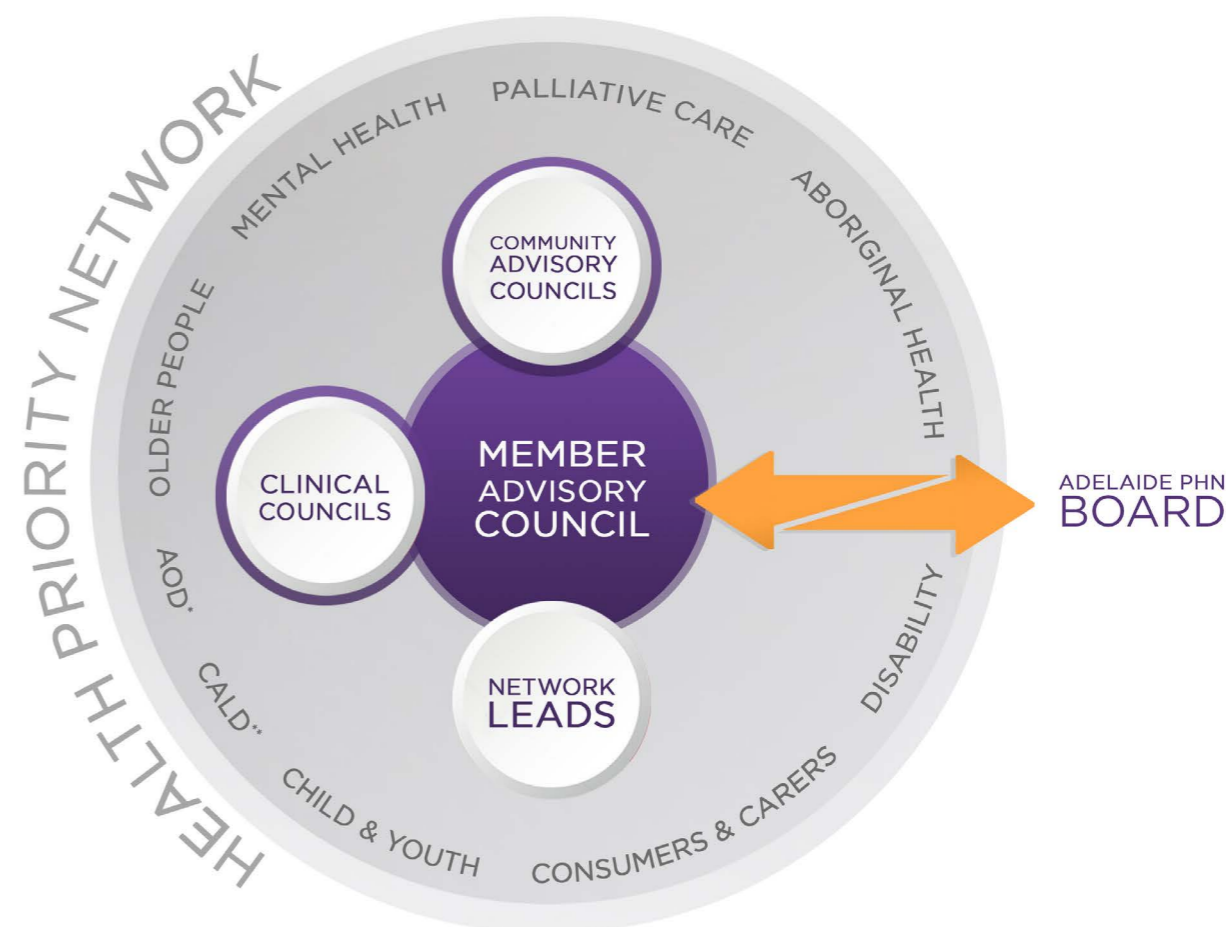
Connecting people interested in improving the primary health care system is an important role of Adelaide PHN.

Fostering these connections and providing opportunities to garner input into our decision-making processes is facilitated through a range of Adelaide PHN membership groups. Seven Health Priority Groups (HPGs) is an important part of this membership model. Recently, members of the HPGs provided feedback to the Adelaide PHN that they were keen to see greater cross-interest area collaboration, and less formalized meeting processes. We have listened to this request and restructured our membership model to suit their needs.

As a result, HPGs are being united to form a combined Health Priority Network that will allow for greater cross-area collaboration around common issues of interest. The areas of health interest have also been expanded to include alcohol and other drugs (AOD) and culturally and linguistically diverse (CALD) people's health. On March 1 this year, Network members will be brought together as one, for the first time, for a symposium to explore collaboration opportunities for the year ahead.

The three Clinical Councils and three Consumer Advisory Councils will remain unchanged and representatives from these six councils, along with two representatives from the Health Priority Network, will come together to continue to form the Member Advisory Council.

People interested in joining a membership group of the Adelaide PHN should email healthprioritynetwork@adelaidephn.com.au



ADELAIDE PHN'S PRIMARY MENTAL HEALTH & AOD SERVICES

Adelaide PHN's commissioned Primary Mental Health Care (PMHC) Services provide a range of services and programs for people experiencing mild, moderate and severe mental health related concerns.

Delivered by eleven providers, four headspace Centres and the headspace Youth Early Psychosis Program (hYEPP), people requiring access to these services can do so via the following methods:

- GPs can send fax referrals via the *Primary Mental Health Central Referral Service*. The fax number is 1300 580 249. This centralised referral service receives all referrals from the Adelaide region & allocates the referrals to the most appropriate provider. This service has a same day response rate & operates 9:00am-4:00pm Mon- Fri (excluding public holidays)
- GPs, mental health professionals, and consumers can call the *Mental Health Enquiry Line* on 1300 898 213. This service is available to provide information about local PMHC services and can assist in selecting the most appropriate providers and services

Adelaide PHN has also commissioned a suite of Alcohol and other Drug (AOD) Treatment Services including a number of specialised and targeted face to face programs across the region.

One commissioned AOD Treatment Service within our suite includes *Daybreak* - an app based program delivered by Hello Sunday Morning which assists those seeking to change their relationship with alcohol and reduce their alcohol consumption.

All of our Adelaide PHN commissioned PMHC services (as well as our AOD Treatment Services) complement existing Commonwealth Government funded online mental health and wellbeing programs and resources. More information and access to these Commonwealth funded programs and resources can be accessed via the following links:

A complete list of our commissioned Primary Mental Health Care Service Providers & AOD Treatment Services can be accessed [here](#).

- the Digital Mental Health Gateway headtohealth.gov.au Services include self-guided and clinician-guided options, usually through a mixture of phone and online methods.
- Mental health services subsidised by Medicare and delivered by private practicing psychiatrists, psychologists, social workers and occupational therapists remain available via referral from a GP. More information about private practicing professionals in your area (as well as their specialisations) can be accessed via [BeyondBlue's 'Find a Professional'](#)

**Please note:*

The Mental Health Triage Service (provided by SA Health) remains the contact for all mental health emergencies.

Click [here](#) or call 13 14 65

Introducing the MY HEALTH RECORD TEAM

Adelaide PHN is proud to announce the My Health Record (MyHR) expansion team that support the ongoing implementation of the MyHR Program. The team will be working to raise awareness of and expand the current MyHR Program within the Adelaide region as well as to implement localised communications across both South Australia and the Northern Territory.

The Australian Government has decided to expand the MyHR program to improve the quality of healthcare in Australia with a MyHR for every Australian by December 2018, unless they state they do not want one.

Your My Health Record Officers

The MyHR Officers are contacting a range of specialists, pharmacists and allied health professionals in Adelaide; informing, training and signing up health service providers to the MyHR system, ensuring they have the required software to access patient's health records online.

In addition to health professionals, our MyHR Officers will be engaging with various communities to prove the public with information about MyHR, look out for our logo at cultural and social events!



Bas Crameri
MyHR Officer for
Pharmacy



Monique Hoey
MyHR Officer for Allied
Health



Clayton Brauwers
MyHR Officer for
Specialists

The MyHR team is also being supported by two communications focussed staff members - William Logues and Daniel DiFiore - and a MyHR Expansion Coordinator.

Contact the Adelaide PHN My Health Record Team

Contact the MyHR team by calling Adelaide PHN on 8219 5900 or emailing digitalhealthinfo@adelaidephn.com.au

What is a My Health Record?

MyHR is a secure online summary of your health information. You control what goes into it and who is allowed to access it. The MyHR includes records of your medical history such as allergies, current conditions, medicine details, and pathology reports.

Information in the MyHR is stored securely in one place and - once access has been consented - can be accessed easily by health care professionals involved in your care anywhere and at any time.



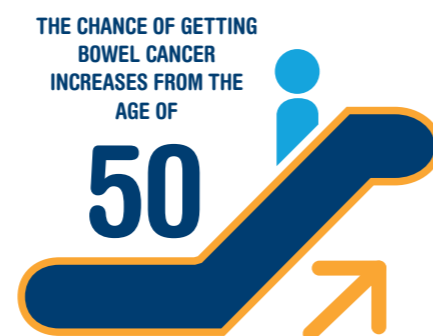
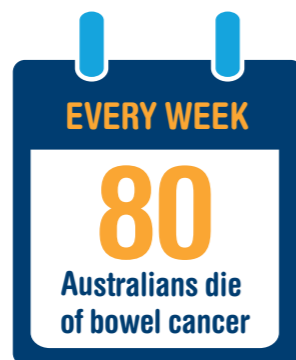
“ As a GP, I often find that it's the carer attending with the patient who knows the most about the patient's treatment and their history ... so it's helpful to have a system like My Health Record that can keep provider, carer and patient information all on the same page together. **”**

Dr. Meredith Makeham
General Practitioner,
Clinical Professor and
Chief Medical Adviser,
Australian Digital
Health Agency

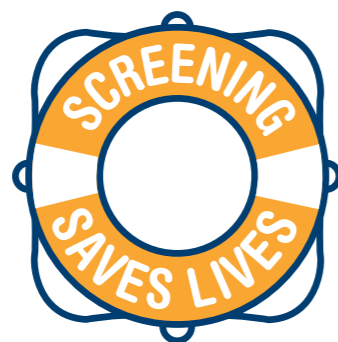


My Health Record

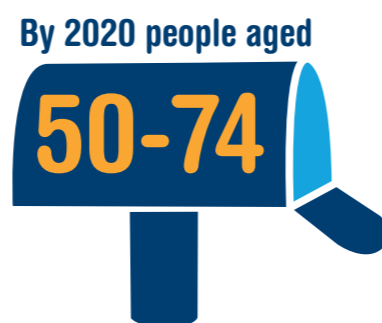
It's a gift that
could save your life



UP TO
90%
OF BOWEL CANCERS CAN
BE SUCCESSFULLY TREATED
IF DETECTED EARLY



BECAUSE IT CAN
DETECT BOWEL CANCER BEFORE
SYMPTOMS APPEAR



By 2020 people aged
50-74
WILL BE SENT
A FREE KIT IN THE MAIL
EVERY TWO YEARS



Australian Government

Call 1800 118 868

australia.gov.au/bowelscreening

If you need help in your language,
please call the Translating and
Interpreting Service (TIS) 131 450

CANCER SCREENING AN UPDATE

Beat Bowel Cancer Project Update:

Adelaide PHN is a partner in the *Beat Bowel Cancer Project* of the South Australian Academic Health Science and Translation Centre.

The project recently commissioned a comparison of the effectiveness of various screening and colonoscopy rates in optimally preventing bowel cancer.

Examination of participation scenarios indicated that a realistic target of 60% bowel screening participation and 90% follow-up colonoscopy by 2020 would almost halve the current age-standardised colorectal cancer mortality rate and from 2030-2040 is predicted to save the health system about \$450 million.

For more information, see the [BBCP Modelling Report here](#).

A New National Bowel Cancer Screening Program Test Kit

The National Bowel Cancer Screening Program is introducing a new immunochemical faecal occult blood test (iFOBT) kit, and associated pathology services in 2018. Eligible people will continue to be invited by mail to complete a test kit at home and send it to the program's pathology laboratory for analysis.

The new kit sample collection method is very similar to that of the kit currently used in the program. An instruction brochure will be provided to invitees with the kit, along with an information booklet.

The instruction brochure, information booklet, video and further information is available at www.cancerscreening.gov.au/bowel

Breast Screening: Screen Time for the Sisterhood

BreastScreen SA recently partnered with *She Shopped* to promote the importance of breast screening and being breast aware.

She Shopped founder Lucy Cornes knows all too well about the impact breast cancer can have on a family and how important it is to have tests. Lucy's mum was diagnosed with breast cancer at only 39 years of age, so she is very passionate about urging all the women in her life to have a free screen with BreastScreen SA.

It's important to take care of the sisterhood, which means reminding the women in our lives to be breast aware and if they're over 50, to have a free breast screen with BreastScreen SA.

This extends to everyone at the front and centre of patient care. We urge all GPs to ask a simple question of their female patients aged 50 to 75: 'Have you had a breast screen?' You can help us overcome our biggest challenge of getting more eligible women to have a breast screen. At the moment, only 1 in 2 do.

Call 13 20 50 to book your breast screen today.

For more information visit www.breastscreen.sa.gov.au



Cervical Screening: First Pathology Service Now Accredited To Test Cervical Screening Self-sampling

The Victorian Cytology Service (VCS) has been announced as the first pathology service in Australia to be approved to test self-samples as part of the renewed cervical cancer screening program.

Self-sampling (collection of a vaginal swab for HPV testing) is available to women who are at least 30 years old and who are under screened (4 years or more since last Pap test) or have never been screened and who decline a practitioner collected specimen.

For more information please visit:

vcspathology.org.au/practitioners/self-collection-resources

For more information on the renewed National Cervical Screening Program, visit:

cancerscreening.gov.au/

Breast Screening: Big Ideas, The Next Decade

The BreastScreen Australia Conference 'Big Ideas: The Next Decade' will be held in Adelaide from April 19-21 this year at the Hilton Adelaide.

As the name suggests, the conference will explore some big ideas that may improve the National Breast Screening Program by investigating new and exciting technologies, discussing and debating current clinical best practices in the early detection of breast cancer, and bringing together medical professionals to explore new avenues in breast cancer diagnosis and treatments.

The conference welcomes medical professionals, consumers, researchers and health advocates. Early Bird is now open, and closes February 14 2018. To register please visit <http://www.bsaconference.com.au/>

GP REFERRAL TO LMH ORTHOPAEDICS

TWO DETAILS WORTH INCLUDING

Following a request from a local GP in regard to clarity around the referral process and waiting lists at the Lyell McEwin Hospital (LMH - specifically orthopaedics - Adelaide PHN has been talking with Dr. Paul Allcock (Local Health Network's Head of Unit for Orthopedics) about GP referral letters.

Whilst the 'Urgent' category is used solely for suspected bone cancer, Dr. Allcock indicated that a GP's referral can play a role in promoting a patient from the 'non-urgent' to the 'semi-urgent' orthopaedic waiting list.

Whether seeking re-assessment or writing an initial referral, Dr. Allcock stressed the importance of providing enough information to judge the true level of the patient's symptoms.

Specifically, Dr. Allcock recommended the following:

1

Use Objective Statements

Objective statements such as "*has become confined to the house*", "*has had to take to a wheelchair*" or "*is woken every night by pain*" provide more information than subjective statements such as "*severe pain*" or "*very severe pain*".

2

Consider & Include BMI Calculations

Patients who are unlikely to proceed to surgery - being those with a Body Mass Index higher than 40 - are not prioritised. Weight loss, even over their waiting period, should be discussed and supported in these circumstances.

PRIMARY
HEALTH CARE
IN ACTION

AN UPDATE ON IMMUNISATION

Quad-Strain Meningococcal Vaccine to be Added to National Immunisation Program (NIP)

The announcement of the Quad-strain vaccine's addition came in a media release on February 2 from the Hon. Greg Hunt, Minister for Health. The release explained that the addition would help protect our youngest Australians from the devastating consequences of meningococcal.

The new vaccine (Nimenrix) covers against A, C, W and Y strains (MenACWY) and will be added to the NIP ahead of the next peak meningococcal season which, based on previous years, is expected to be in the second half of the year.

Currently, infants aged 12 months are given a single-strain Meningococcal C vaccine. Upgrading to the quad-strain is great news for parents and infants, but it's only the

first step in the Turnbull Government's broader approach to reduce the impact of meningococcal.

This article is based on the original media release. For more information please download the release [here](#).

Medical Exemption to Vaccination and the Australian Immunisation Register

On August 16 2017, changes were made to allow additional doctors to notify a medical exemption to vaccination to the Australian Immunisation Register (AIR).

Medical practitioners, play a key role in supporting patients to fulfil their vaccination requirements. In the event an individual cannot be vaccinated for medical reasons, medical practitioners are now one of the specific groups of doctors able to notify the AIR that the individual has a medical exemption to vaccination.

View the official advice from the Chief Medical Officer regarding this update [here](#).



Kidney Health Week March 5 — 11, 2018

1 in 3 people are at increased risk of kidney disease.

During Kidney Health Week we encourage all Australians to find out the risk factors and visit their GP for a simple kidney check.

MORE
INFO
HERE

Hear the Whisper, Not the Roar

The Mental Health Services
(TheMHS) Conference



ADELAIDE
28-31 AUGUST 2018





**JOIN US TO
CELEBRATE
THIS SPECIAL
DAY**

**ADELAIDE
SHOWGROUND**
Ridley Centre



This program is funded by the Adelaide Primary Health Network-an Australian Government Initiative

CLOSING the GAP DAY

2018
March 22nd
11.00 AM - 3.00 PM



MUSIC BY NANCY BATES & ELLIE LOVEGROVE

MC SHELLEY WARE | COMEDIAN JOSHUA
WARRIOR | DELICIOUS LUNCH | FREE HEALTH
CHECKS | HENNA TATTOOS | NGANKARI TRADITIONAL
HEALERS | SA METROPOLITAN FIRE SERVICE TRUCKS |
MEET & GREET WITH FORMER AFL CROWS STAR EDDIE
HOCKING | PETTING ZOO | JUMPING CASTLE & MANY MORE
FUN ACTIVITIES FOR KIDS

FREE REGISTRATION ONLINE
closingthegapday.net

If you require transport assistance to this event, contact the
NHN's **Closing the Gap team (08) 8209 0700** or email **info@closingthegapday.net**



CLOSING THE GAP **2018**

Striving for Indigenous Health Equality

Aboriginal and Torres Strait Islander people can expect to live up to 10-17 years less than non-Indigenous Australians. The health gap exists largely as a result of decades of government inaction and a continuing lack of appropriate medical services. The Australian Government's National Aboriginal and Torres Strait Islander Health Plan 2013-2023 identifies actions to address challenges in the current system and improve the patient journey of Aboriginal and Torres Strait Islander people.

The Northern Health Network (NHN) is funded by the Adelaide PHN to deliver the Closing the Gap program in metropolitan Adelaide, (and by Country SA PHN for delivery across Yorke and Mid North SA). The program is provided by a team of Aboriginal and Torres Strait Islander Outreach Workers and Care Coordinators who work together to assist Aboriginal and Torres Strait Islander people to obtain primary health care as required, provide care coordination services to eligible Aboriginal and Torres Strait Islander people with chronic disease/s who require coordinated, multidisciplinary care, and improve access for Aboriginal and Torres Strait Islander people to culturally appropriate mainstream primary care.

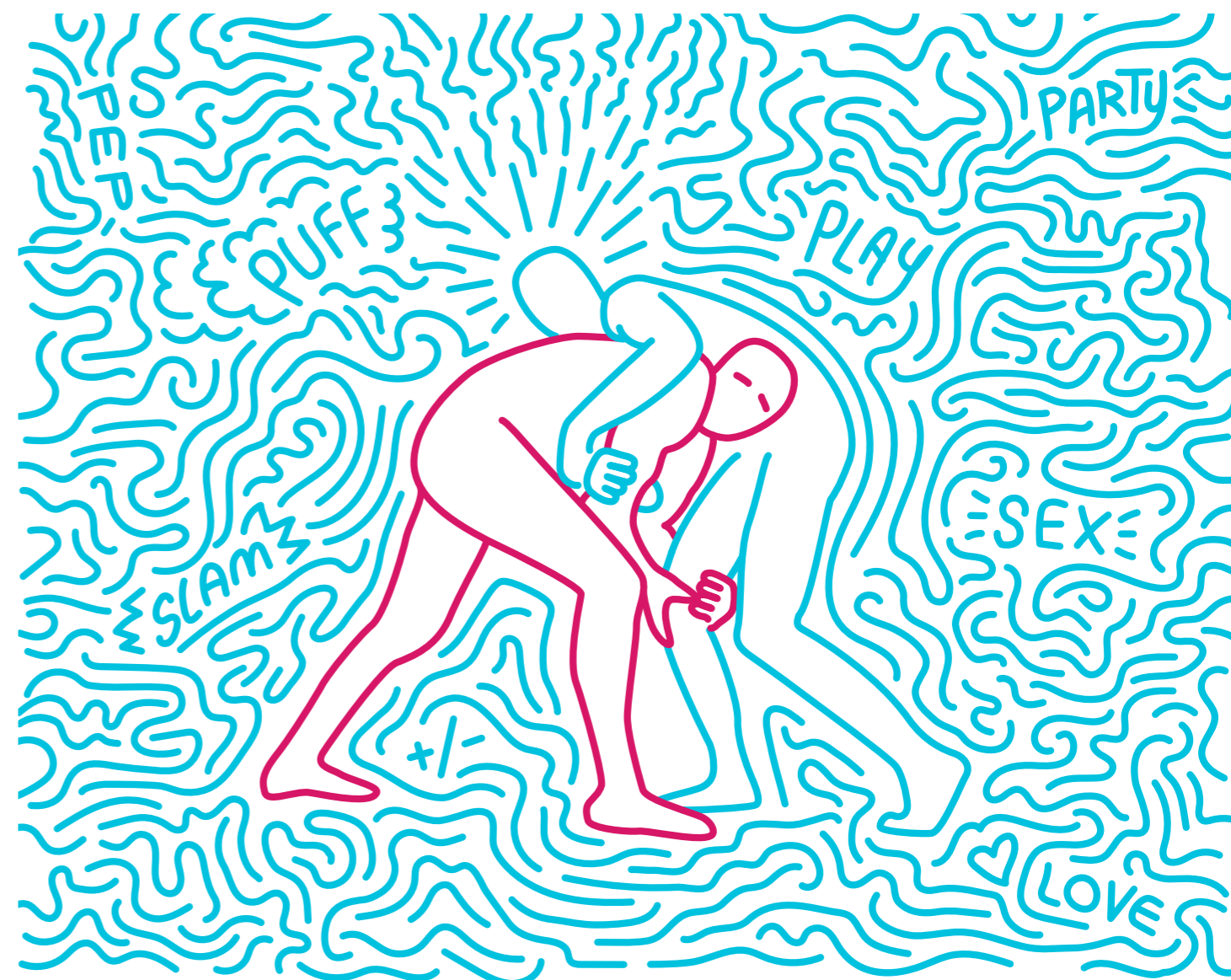
"...we see Closing the Gap Day as a vital step to increase the awareness of Aboriginal and Torres Strait people's health needs. This celebration is one way to bring the community together, to have fun and talk about what needs to be done to make people well..."

Sageran Naidoo, CEO.

Closing the Gap Day will be held from 11:00am - 3:00 pm on March 22 at the Ridley Centre, Adelaide Showground. The event is FREE and encourages attendance by people from all walks of life.

-This article is based closely on NHN's media release of the same name which can be accessed [here](#) -

If your patient is not a PIR consumer, and you need information about other services that can help people with a psychosocial disability test or their eligibility for the NDIS, contact CAH PIR.



Touch base with SAMESH
on (08) 7099 5300
for program details.



SX MESH
A JOINT PROGRAM OF SHINE SA & VAC



Foundations of General Practice Nursing Workshops

APNA is thrilled to deliver the highly regarded Foundations of General Practice Nursing Workshops Australia wide.

General practice nursing is unlike other areas of nursing practice. Attending a Foundations workshop is the perfect way to build on your expertise.

Developed and delivered by local nurse leaders, this highly engaging two-day workshop provides an overview of the key skills and knowledge required by nurses new and transitioning into general practice.

Gain up to 12 hours of APNA endorsed CPD while you learn, engage and network with nurses who understand what it's like to work in general practice.

On completion of the workshop, participants will have an understanding of the roles and responsibilities associated with:

- The Australian healthcare system and primary health care
- Professional practice and professional development
- Clinical assessment and chronic disease management
- Wound management
- Immunisation
- Quality and safety
- Infection prevention and control
- Information management and digital health

Adelaide 27 & 28 April
Cliftons Adelaide
1/80 King William St,
Adelaide CBD

APNA member \$350
 Non-member \$450

Register online at
www.apna.asn.au
 For more information
 contact admin@apna.asn.au



Here are a few quotes from our attendees:

Thank you so much! Came away feeling empowered!

Loved the workshop. So glad I went along. Learnt heaps and met some nice people.

So good to meet other nurses in similar roles.

I found this very helpful having never had an orientation to General Practice Nursing



NHMRC STILLBIRTH SURVEY

Calling all perinatal clinicians for participation.

Stillbirth has a profound and long lasting impact on parents, families and communities as well as health care providers. Australia trails a number of other high income countries, with late gestation stillbirth rates 35% higher than the lowest reported rates globally. High quality clinical audits have shown that around 20-30% of stillbirths could be avoided with better care.

The NHMRC Centre of Research Excellence in Stillbirth is conducting a survey to understand practices across Australian hospitals around key elements of care to reduce stillbirth, to inform the development of a stillbirth prevention bundle of care, followed by wide-scale implementation.

This survey is recommended to perinatal clinicians, participation is entirely voluntary, and the information participants provide is completely confidential.

Participation is requested by February 28 2018.

For more information please visit:

<https://materresearch.checkboxonline.com/care-practices-to-reduce-stillbirth.aspx>



CAREERS & VACANCIES

Local job vacancies in the Primary Health Care Industry are advertised in the '[Careers](#)' section of [our APHN website](#). This is a free service offered to health services & individuals in the Adelaide region.

EDUCATION & EVENTS

Are you looking for local primary health related education & event opportunities? We list a large range of sessions on our website under [What's Happening](#).

Adelaide PHN distributes APHN Connect to provide beneficial and relevant information. The content is sourced from credible organisations, but please note we do not undertake extensive quality reviews. While the Australian Government helped fund this document, it has not reviewed the content and is not responsible for any injury, loss or damage however arising from the use of or reliance on the information provided herein.

phn
ADELAIDE

An Australian Government Initiative