

By becoming a member of a HPG you will receive relevant and up-to-date information about Adelaide PHN activities and initiatives, plus:

- Monthly Adelaide PHN e-Newsletter
- Education and training events
- Community engagement activities

If you would like more information on one or more of the other HPGs, please contact us for further information. Or alternatively download a registration form from our website.

(Participation in more than one group is possible, provided that you or your organisation fits the eligibility criteria for each group.)

- Mental Health
- Childhood and Youth
- Older People and Aged Care
- Palliative Care
- Disability
- Aboriginal Health



Please return by either:

Email
hpg@adelaidephn.com.au

Postal
c/o Adelaide PHN
HPG Membership
PO Box 313
Torrensville Plaza SA 5031

Contact Details

Level 1, 22 Henley Beach Road
Mile End SA 5031
Phone | 08 8219 5900
Fax | 08 8125 6691
www.adelaidephn.com.au
www.facebook.com/adelaidephn
@AdelaidePHN

phn
ADELAIDE

An Australian Government Initiative

Consumers and Carers

Health Priority Group (HPG)



Health Priority Groups (HPGs) aim to bring together a range of stakeholders to include health professionals, service providers and community members to discuss and raise relevant primary health care issues for the metropolitan region. HPGs form part of the Adelaide PHN membership and are designed to facilitate input towards achieving our objectives.

The (7) HPGs are:

- Mental Health
- Aboriginal Health
- Older People and Aged Care
- Consumers and Carers
- Palliative Care
- Disability
- Childhood and Youth

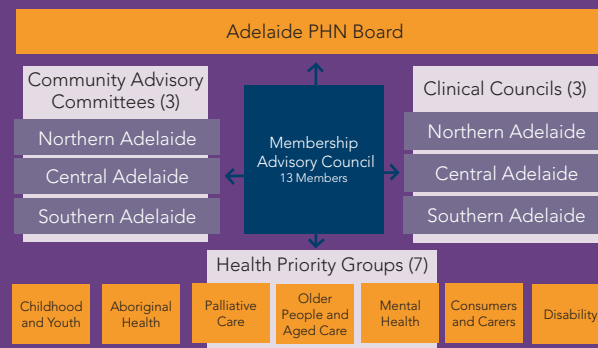
Why participate in a Health Priority Group?

Health Priority Groups will:

- Identify and raise relevant primary health care issues with the Adelaide PHN, including gaps in services, patient journey issues, referral pathways, and issues around accessibility and affordability.
- Work with the Adelaide PHN, other HPGs, Clinical Councils and Community Advisory Committees to advocate and work on solutions that support the delivery of efficient, effective and equitable health care.
- Consolidate and coordinate better referral pathways; information sharing and collaboration.
- Receive regular updates and information on current and new Adelaide PHN initiatives, projects, and innovations.
- Nominate a representative to sit on the Membership Advisory Council (MAC)
- Receive representative invitation to Adelaide PHN Annual General Meeting with one vote per HPG. This will provide the group with a collective say in future strategic directions and nominations for Board Directors.
- Have flexibility that allows each HPG to have input into their terms of reference, determine how and when they meet, how the group is organised, and how the group will raise issues with and collaborate with Adelaide PHN, along with the resources to achieve this.
- Be open to all individuals and organisations that meet the relevant membership criteria.

The Consumers and Carers HPG Eligibility Requirements

- Any consumer or carer organisation with at least 50% of their service delivery footprint in the Adelaide PHN region. (Note: multiple representatives are welcome, however any one organisation or affiliate has only one voice in any consensus discussion or decision).
- Any peak body or stakeholder organisation/group who advocates for or represents relevant consumer and carer issues in the Adelaide PHN region. (please see note above).
- Any individual, relevant health professional who provides at least 50% or more of their services to consumers or carers in the Adelaide PHN region.
- Any individual consumer or carer residing in the Adelaide PHN region who is able to reasonably participate.



Health Priority Group Registration Form

Please complete the details below to join the **Consumers and Carers** HPG. (Please ensure you are familiar with the eligibility criteria for the relevant HPG you wish to participate in).

Your Organisation/Group:

Contact Name:

Position:

Phone:

Email:

Postal Address: