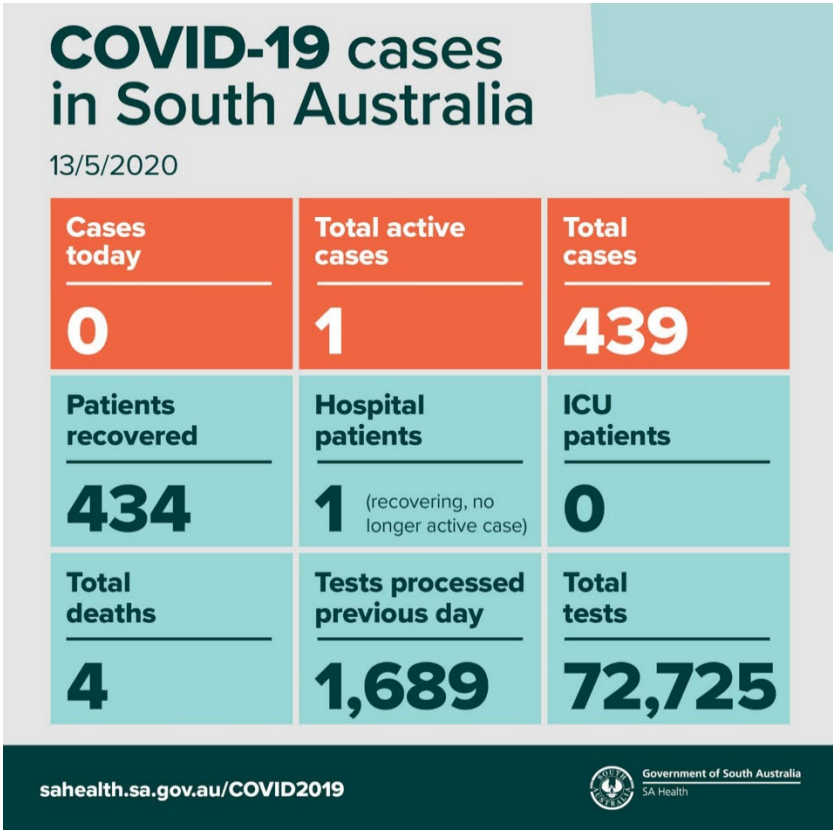




13 May 2020

Please email Health.COVID-19GPLiaison@sa.gov.au if you have any questions, concerns or comments and I can follow-up with the relevant group or people.



RACF Testing

Thank you for the questions regarding testing options in SA for residential aged care facilities. Both Clinpath and SA Pathology are testing residential aged care patients via rapid testing. There are different processes for ordering tests with each pathology lab - Clinpath here and SA Pathology here. The results will be communicated to you from the lab as per the normal result process.

Broken Hill Travel Exemptions

Exemptions are now being granted to health professionals who service the community of Broken Hill, who travel directly into Broken Hill to deliver services. This is fantastic news for the residents of Broken Hill. Exemptions in writing can be sent to HealthExemptions.Covid19@eso.sa.gov.au

COVID-19 UPDATE

COVID-19 Information from the SA Health GP Liaison

Fluad supply

Thank you so much to all the GPs and practices who emailed me with their Fluad >65 years stock in addition to completing the SA Health audit. A list of practices with stock of Fluad can be seen here, keeping in mind this reflects the 8th of May stock. This list will be taken down in a week, so as to remain as accurate as possible.

GP Waiting Rooms

Please keep in mind that social distancing, where possible, should be continued (1.5metres distance between people). In terms of waiting rooms, the one person per 4m² does not apply to health facilities. However, it is advised that there be 1.5m between chairs if possible or chairs blocked off.

Elective surgery in South Australia

Planning to recommence elective surgery is underway in SA, as part of the response to easing COVID-19 restrictions. This includes prioritising overdue procedures, which will commence from Thursday. A new directive will come into effect on midnight 14/5/20.

COVID-19 WEBINAR Update for SA GPs TONIGHT – 13/5/20

Adelaide PHN, in conjunction with SA Health, SA Pathology, the RACGP and AMA(SA), will be hosting a live webinar tonight at 6pm ACST. The webinar will provide an update on COVID-19 in SA. Register here.

SA Health Website

The [Health Professionals COVID-19 resources](#) page has now updated.

Priority Care Centres (PCC) GP Pathway

Information about the PCC pathway for GP referrals to avoid ED attendances is now [available online](#).

- [Priority Care Centre Information Sheet](#)
- [Information Sheet for GP Referred Patients to PCC](#)
- [GP info for PCC](#)
- [GP pathway to PCC](#)

Telephone numbers

- SA COVID-19 Information line: 1800 253 787
- SA COVID-19 Social and non-clinical support: 1300 705 336
- SA COVID-19 Mental health support: 1800 632 753

Dr Emily Kirkpatrick, BMed MPH MMed DCH GCHPE CHIA FRACGP, SA Health COVID-19 GP Liaison, Department for Health and Wellbeing