

# 2018 ADELAIDE PHN HEALTH PROFILE

## OUR REGION

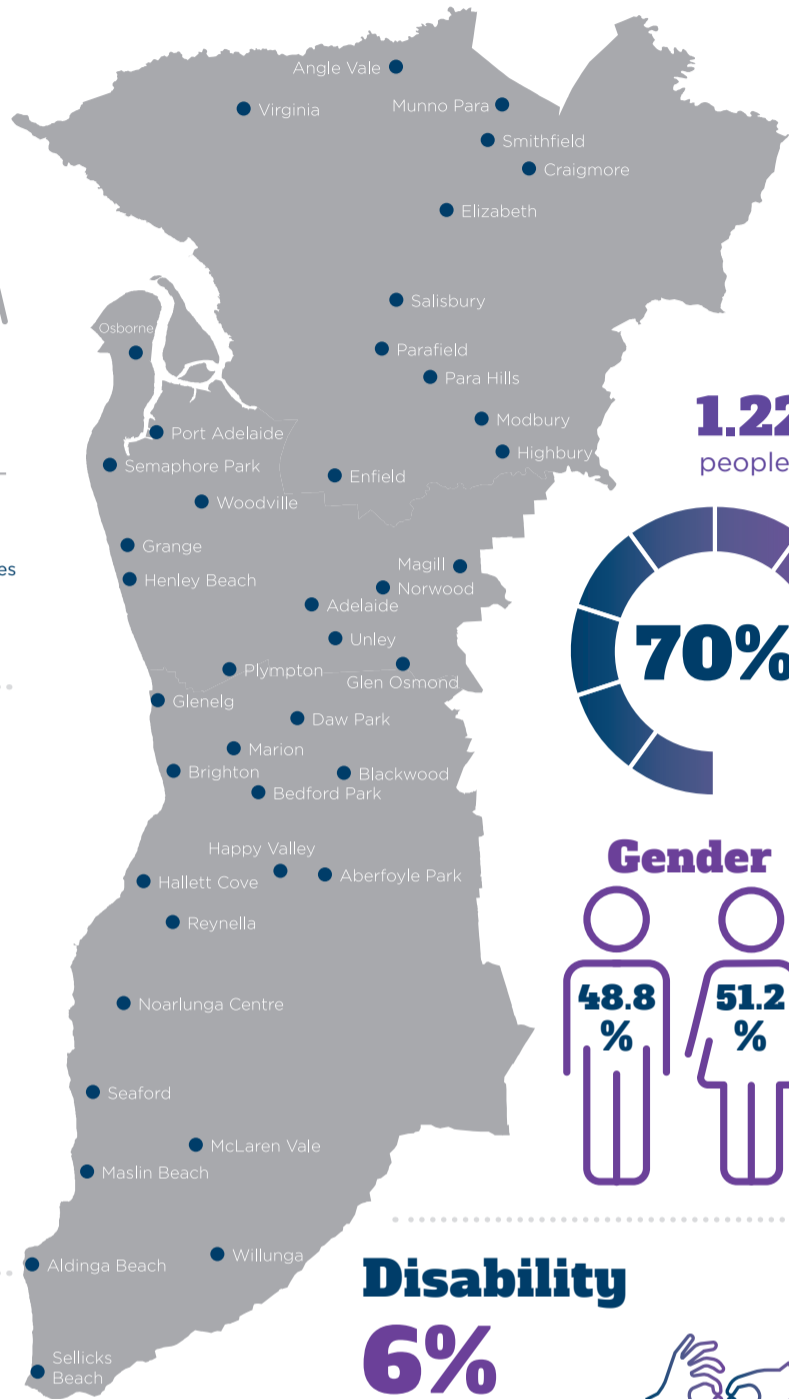
The traditional owners of the Adelaide PHN region are the Kaurna people



**1.22 million** people live in our region



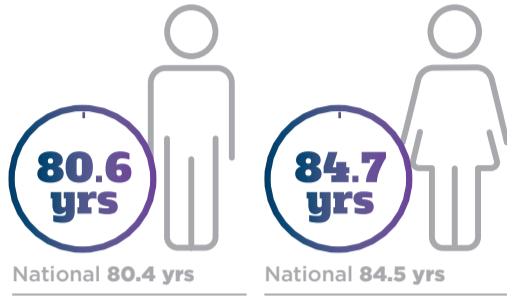
Adelaide PHN covers 0.2% of the state geographically and incorporates 70% of South Australia's total population across 17 local council regions



### Life expectancy

For Aboriginal and Torres Strait Islander population in Australia, life expectancy was estimated to be **10.6 years lower** for males and **9.5 years lower** for females than that of the non-Aboriginal and Torres Strait Islander population.

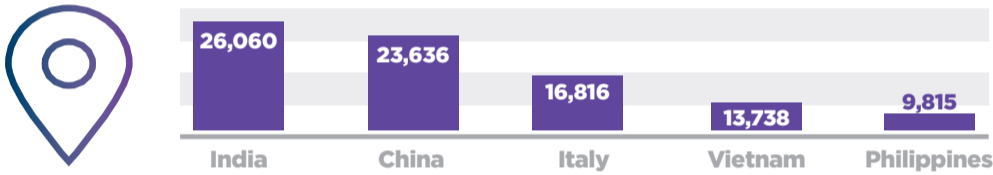
Born in 2010-2012.



### Median age

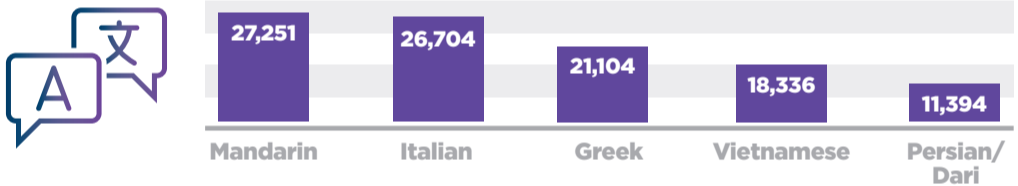


### Birthplace (main non-English speaking countries of origin)



### Languages (non-English)

More than **200 different languages** including Aboriginal languages are spoken in Adelaide PHN



### Housing

Couples with no children **24.5%**  
Couples with children **28.3%**  
One parent family **11.1%**  
Single person **26.6%**

**Housing Tenure**  
Purchasing or own home **64%**  
Renting **21.9%**  
Social housing **6.5%**

On Census night, over **6000** people experienced homelessness in the APHN region (2011)

### Gender



### Income

**\$1,246** median weekly household income in the PHN region (\$1,431 Australia)

### Disability

**6%** in the region have a disability



## RISK OVERVIEW

### Health

**55%** of adults do an **insufficient** amount of **weekly physical activity** (Australia: 56%)

**52%** reported having a **long-term health condition** in 2015-16 (Australia: 50.2%)

**16%** of adults consume **more than two standard drinks** per day on average (Australia: 17%)

**12%** of adults are **daily smokers** (Australia: 14.5%)

**34%** of adults have **high blood pressure** (Australia: 34%)

**23%** of adults have **uncontrolled high blood pressure** (Australia: 23%)

**63%** of adults are **overweight or obese** in APHN (Australia: 63%)

### Psychological Distress

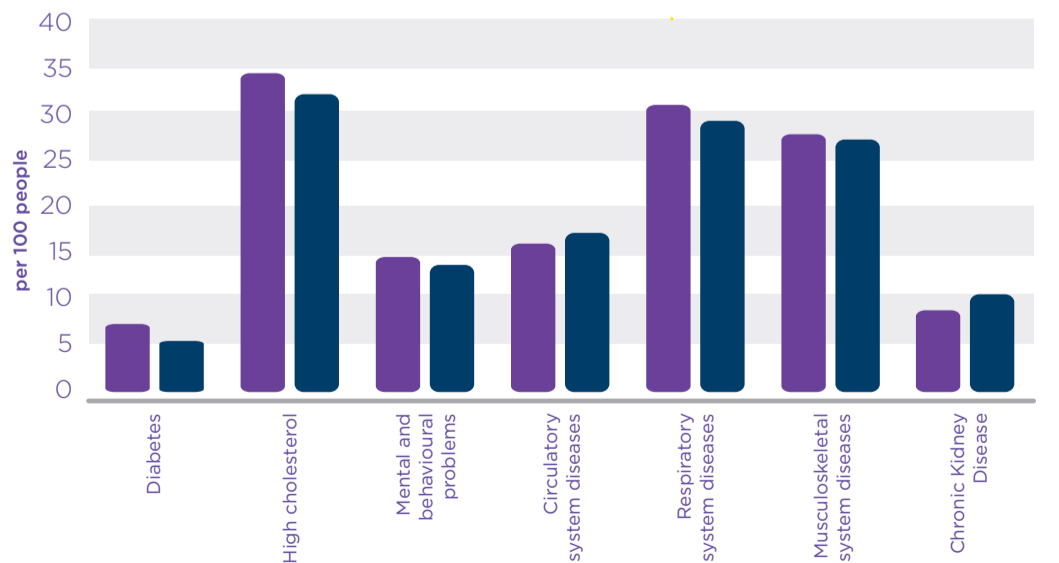
In Adelaide PHN, **14 in 100** adults reported experiencing **psychological distress** (Australia: 12 in 100)

**34 in 100** Aboriginal and Torres Strait Islander people reported experiencing **psychological distress**

## CHRONIC DISEASE

### ESTIMATED CHRONIC DISEASE

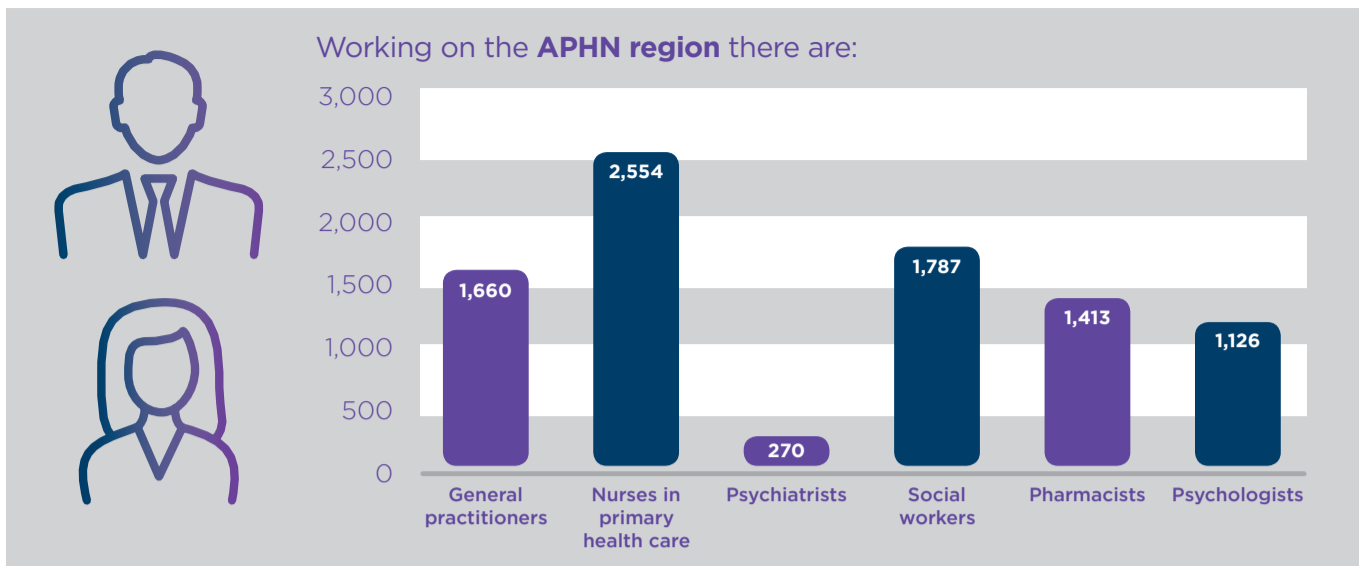
Adelaide PHN (purple), Australia (dark blue)



**25%** of the Adelaide PHN population had **two or more chronic conditions**

**60** out of every 100 encounters with General Practitioners in Adelaide PHN were for **chronic conditions**

## PRIMARY HEALTHCARE WORKFORCE

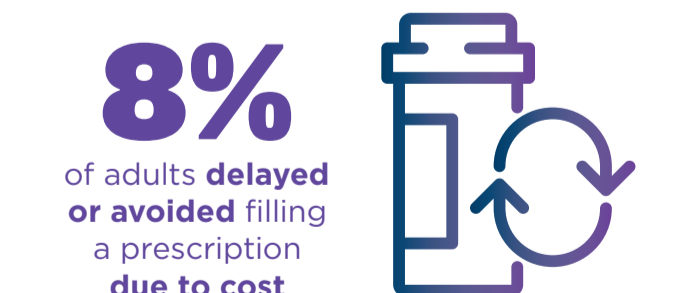
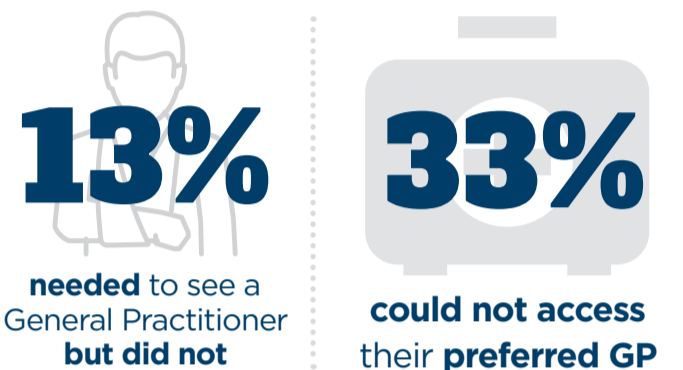


## HEALTHCARE SERVICES

Within the APHN boundary there are:



## BARRIERS TO PRIMARY HEALTHCARE



## SERVICE UTILISATION

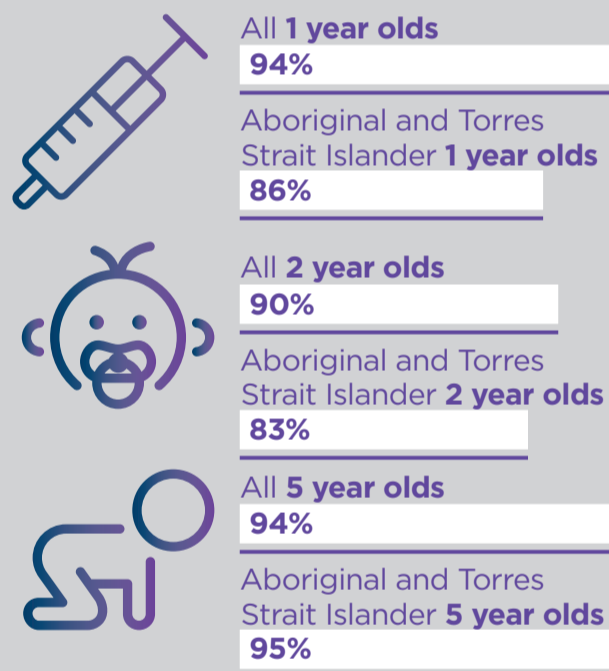
On average people attended a GP **6 TIMES A YEAR**

in the last 12 months **8 out of 10** adults saw a GP

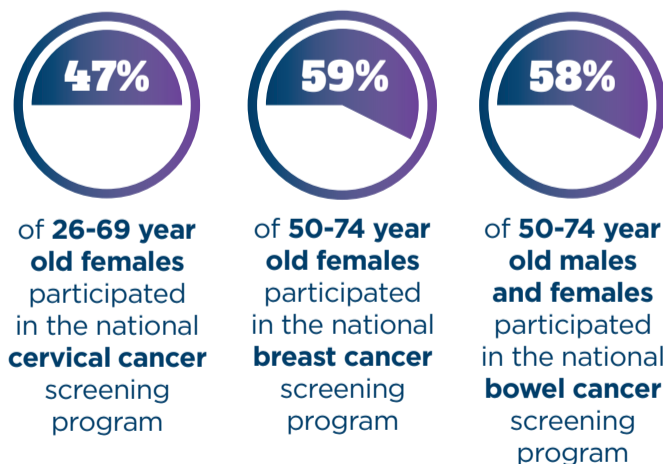


### Immunisation

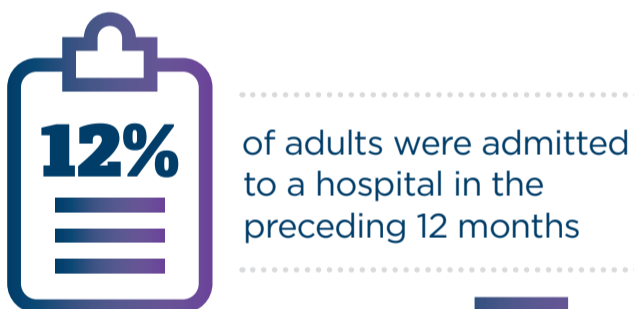
Proportion of children who are fully immunised:



### Cancer Screening

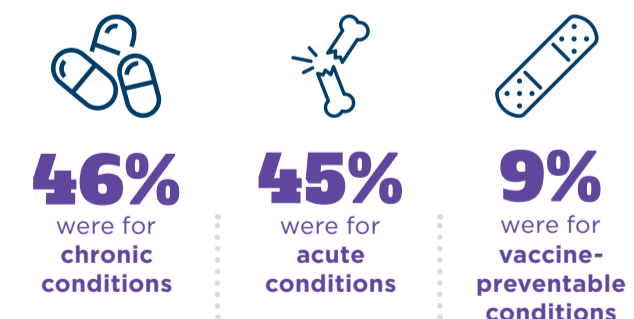


### Hospitalisations



**36,440** potentially preventable hospitalisations

For every 100 potentially preventable hospitalisations:



### Mental Health



- 87,780 people accessed MBS subsidised mental health-related services
- GP prepared 63,516 mental health treatment plans
- 141,856 people accessed PBS subsidised mental health-related medications
- 13,177 hospitalisations due to mental health conditions

**17,981**

Emergency Department presentations for a mental health condition

**33%**

presented with anxiety-related disorders

**22%**

presented with substance-related disorders