



Health Equity Awards 2025

Application Guidelines

The 2025 Health Equity Awards are supported by funding through the Australian Government's PHN Program

phn
ADELAIDE

An Australian Government Initiative

Acknowledgement

We acknowledge the Kurna peoples who are the Traditional Custodians of the Adelaide region. We pay tribute to their physical and spiritual connection to land, waters and community, enduring now as it has been throughout time. We pay respect to them, their culture and to Elders past and present. We would also like to acknowledge and pay our respects to those Aboriginal and Torres Strait Islander people from other Nations who live, work, travel and contribute on Kurna Country.

Marni Naa Pudni "Welcome"

Health Equity

Adelaide PHN hosts the Adelaide PHN Health Equity Awards to recognise the hard work and dedication of our region's primary health care organisations.

With widening gaps in health equity due to several factors, including the COVID-19 pandemic, it has become more important than ever to address them and focus on the social determinants of health.

What is Health Equity?

Health equity means all people (individuals, groups, and communities) have a fair chance to reach their full health potential and are not disadvantaged by social, economic, and environmental conditions. This includes equitable (fair) access to health care professionals, healthy food and a safe living environment. It means the ability to be well across all aspects of life, from work to home and medical care.



Health Equity and Health Equality

It is important to recognise that health equity is not the same as health equality. Equality refers to each individual or group of people being given the same resources or opportunities. Equity recognises that not all individuals or groups have the same needs and therefore require access to different resources and opportunities to full realise their best health and wellbeing.

Multiple factors can contribute to health disparities. These can include:

- Educational inequality, which can lead to increased health risk behaviours such as smoking, drinking etc.
- Inadequate access to healthcare
- Language barriers
- Poverty, which can contribute to delays in seeking preventive care and so on

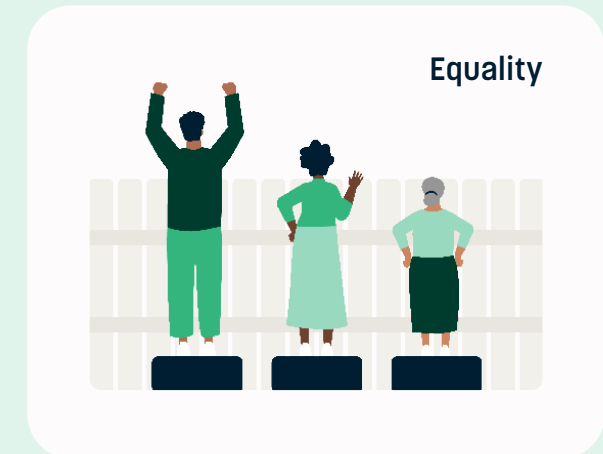
What supports can be provided to address health inequity?

Health disparities are experienced when populations are disadvantaged by their social or economic status, geographic location, and environment.

To achieve health equity, we must come together to change the policies that have led to health disparities, which include eliminating preventable health challenges and overcoming obstacles to health care.

Adelaide PHN's [Access and Equity Framework](#) presents the following guiding principles of achieving Access & Equity:

- Embedding place-based thinking
- Co-creating solutions
- Nurturing authentic partnerships
- Addressing broader social determinants of health
- Removing barriers to health equity
- Driving quality improvement



Awards Overview

The 2025 Adelaide PHN Health Equity Awards will recognise outstanding organisations and individuals for their efforts to continuously improve equity and access for vulnerable communities in the Adelaide metropolitan region.

These awards will recognise organisations and/or individuals who have:

1. Improved health outcomes in the Adelaide PHN region.
2. Achieved equity for vulnerable populations, such as the homeless, CALD, Aboriginal and Torres Strait Islander communities, LGBTIQ+ communities etc., by enhancing access and outcomes.
3. Improved patient journeys of care through alliances and partnerships with key primary care stakeholders in the local region.

Any individual and/or organisation working in primary health care across the Adelaide metropolitan area can enter the awards. We would like to hear about you and your team's impact on improving community outcomes and experiences.

Your submission may consider Social Determinants of Health as part of your strategy to address health equity and access to services.

World Health Organization (WHO) defines Social Determinants of Health as the conditions in which people are born, grow, work, live, and age, and the wider set of forces and systems shaping the conditions of daily life.

Some examples of the Social Determinants of Health, which can influence health equity are:

- Education
- Unemployment and working life conditions
- Housing, basic amenities and the environment
- Early childhood development
- Social inclusion and non-discrimination
- Structural conflict
- Access to affordable, good quality health services

The awards will be presented at the annual dinner on 23 August, 2025 at The Playford Hotel Adelaide.



Award Criteria

Applications are to be submitted in the form of a case study to effectively showcase the success of the initiative. Your submission should consider the following:

Criteria 1

What is the matter being addressed and how was this identified?

Criteria 2

How have you addressed this matter?
Consider the following aspects:

- i. Leadership Commitment
- ii. Embedding an equity lens to day-to-day operations
- iii. Building Capacity and Skills

Criteria 3

How has your initiative improved the health and wellbeing outcomes of your patients/clients?

Consider the [quintuple aim](#) while demonstrating the 'impact' of your initiative.

Criteria 4

How does this initiative demonstrate your organisation's commitment to health equity? Consider the following aspects:

- i. Authentic community and partner engagement to address health inequities
- ii. Utilising Quality Data and Evidence to identify inequities, inform practices, and evaluate interventions

Criteria 5

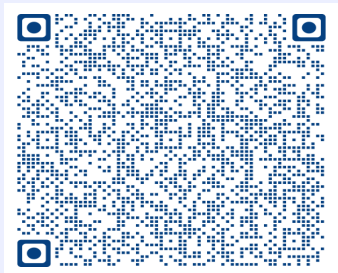
What are your next steps towards building further organisational capability in advancing health equity?

Submission Guidelines

After reviewing the awards criteria in this document, all applications are to be completed and submitted through [this link](#) or the QR code below.

This page will take you through the appropriate steps in submitting your application. More information about the assessment criteria and scoring rubric is [available here](#).

All the information in your submission will be used for promotional purposes if your entry is successful. This includes promotion through Adelaide PHN's communication channels, including website, social media, and e-newsletters.



Award Winner Videos

All award winners will have the opportunity to work with Adelaide PHN to develop a 90-second video showcasing their achievements. This video will be played to the audience at the awards dinner and made available to the winners for promotional/marketing purposes.

If successful, the winners must be available to work with our Communications team in June for filming and ensure staff and community participation. Filming will be completed on the award winner's premises and is expected to take around 4-5 hours. The Adelaide PHN Communications team will contact the award winners to schedule filming.

Usage of Video Footage

Finalists may share the video as it is

As the owner of the video footage, Adelaide PHN retains full ownership rights. Therefore, you agree not to edit or modify the video in any way without our explicit permission. The video must be shared in its original form.

Changes after approval

Once the final version of the video has been approved by Adelaide PHN, you are not allowed to request any further changes. We will make every effort to ensure that the video meets your expectations before obtaining our final approval.

Shelf life of the video

The video produced is intended to be used within the program contract period. If Adelaide PHN withdraws funding from the program at a later period, you are not permitted to use this video for promoting your services.

Raw footage request

If you require access to the raw footage for use in your corporate videos, please notify us and request permission. We will consider your request and provide you with the necessary footage if appropriate.



Key Dates

If you require assistance or more information, please contact Adelaide PHN on aphnhealthequityawards@adelaidephn.com.au.

28 April 2025

Entries are open to submit your case study. Remember to submit your application by the due date.

14 June 2025

All the award recipients will be notified. We will contact the award recipients to schedule dates for filming.

23 August 2025

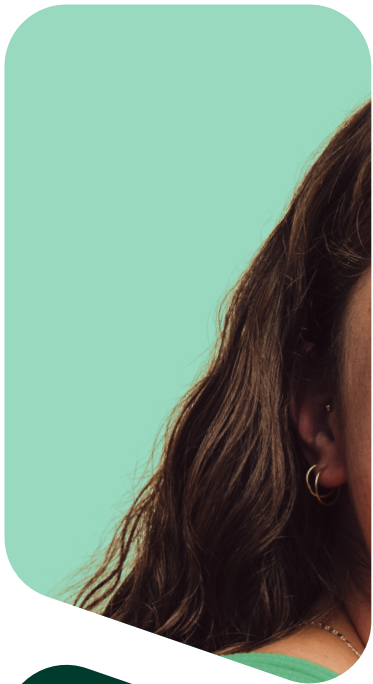
Award recipients announced at the Health Equity Awards 2025 event at The Playford Hotel, Adelaide.

24 May 2025

Entries are now closed and we will not be accepting any further applications after this date.

Late June 2025

Award recipient video filming will take place in late June as scheduled with award recipients.



Health Equity
Awards 2025

phn
ADELAIDE

An Australian Government Initiative