



Health Equity Awards 2026

Application Guidelines

The 2026 Health Equity Awards are supported by funding through the Australian Government's PHN Program

phn
ADELAIDE

An Australian Government Initiative

Acknowledgement

We acknowledge the Kurna peoples who are the Traditional Custodians of the Adelaide region. We pay tribute to their physical and spiritual connection to land, waters and community, enduring now as it has been throughout time. We pay respect to them, their culture and to Elders past and present. We would also like to acknowledge and pay our respects to those Aboriginal and Torres Strait Islander people from other Nations who live, work, travel and contribute on Kurna Country.

Marni Naa Pudni "Welcome"

Health Equity

Adelaide PHN hosts the Adelaide PHN Health Equity Awards to recognise the hard work and dedication of our region's primary healthcare organisations.

With widening gaps in health equity due to several factors, including the COVID-19 pandemic, it has become more important than ever to address them and focus on the social determinants of health.

What is Health Equity?

Health equity means all people (individuals, groups, and communities) have a fair chance to reach their full health potential and are not disadvantaged by social, economic, and environmental conditions. This includes equitable (fair) access to healthcare professionals, healthy food and a safe living environment. It means the ability to be well across all aspects of life, from work to home and medical care.



Health Equity and Health Equality

It is important to recognise that health equity is not the same as health equality. Equality refers to each individual or group of people being given the same resources or opportunities. Equity recognises that not all individuals or groups have the same needs and therefore require access to different resources and opportunities to full realise their best health and wellbeing.

Multiple factors can contribute to health disparities. These can include:

- Educational inequality, which can lead to increased health risk behaviours such as smoking, drinking etc.
- Inadequate access to healthcare
- Language barriers
- Poverty, which can contribute to delays in seeking preventive care and so on

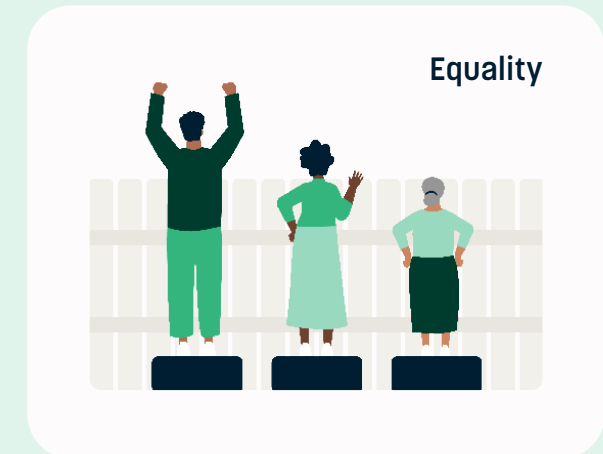
What supports can be provided to address health inequity?

Health disparities are experienced when populations are disadvantaged by their social or economic status, geographic location, and environment.

To achieve health equity, we must come together to change the policies that have led to health disparities, which include eliminating preventable health challenges and overcoming obstacles to healthcare.

Adelaide PHN's [Access and Equity Framework](#) presents the following guiding principles of achieving Access & Equity:

- Embedding place-based thinking
- Co-creating solutions
- Nurturing authentic partnerships
- Addressing broader social determinants of health
- Removing barriers to health equity
- Driving quality improvement



Awards Overview

The 2026 Health Equity Awards recognise outstanding organisations and individuals who can demonstrate how their work is contributing to improving health equity across the Adelaide metropolitan region.

These awards celebrate initiatives that show measurable impact in improving access, experience, and health outcomes for communities experiencing vulnerability and disadvantage.

We are seeking submissions that clearly demonstrate:

1. Improved health and wellbeing outcomes in the Adelaide PHN region.
2. Reduction of inequities in access and outcomes for vulnerable population groups.
3. Strengthened patient journeys and models of care through meaningful partnerships and collaboration with key primary care stakeholders in the local region.

Any individual and/or organisation working in primary healthcare across the Adelaide metropolitan area can enter the awards. We invite you to share not only what you did, but the difference it has made – particularly for those who experience the greatest barriers to care. Your

submission may consider Social Determinants of Health as part of your strategy to address health equity and access to services.

World Health Organization (WHO) defines Social Determinants of Health as the conditions in which people are born, grow, work, live, and age, and the wider set of forces and systems shaping the conditions of daily life.

Some examples of the Social Determinants of Health, which can influence health equity are:

- Education
- Unemployment and working life conditions
- Housing, basic amenities and the environment
- Early childhood development
- Social inclusion and non-discrimination
- Structural conflict
- Access to affordable, good quality health services

The awards will be presented at the annual dinner on 22 August, 2026 at the Hotel Grand Chancellor Adelaide.



Award Criteria

Applications must be submitted in the form of a structured impact case study. Submissions should clearly demonstrate the need address, the approach taken, and the measurable outcomes achieved, supported by relevant data and evidence. Your submission should address the following:

Criteria 1

What is the matter being addressed and how was this identified?

Your response must be supported by data to demonstrate the situation needing addressing.

(Response must not exceed 400 words)

Criteria 2

How did you approach or address this matter? And how does this approach demonstrate your organisation's commitment to health equity?

Consider the following aspects:

- i. Leadership Commitment
- ii. Authentic community and partner engagement to address health inequities
- iii. Embedding an equity lens to day-to-day operations
- iv. Building Capacity and Skills
- v. Utilising Quality and Data and Evidence to identify inequities, inform practices, and evaluate interventions

(Response must not exceed 1000 words)

Criteria 3

How has this initiative meaningfully impacted the lives of people and made a difference in the community in terms of the quintuple aim (patient experience, population health, reducing costs, care team wellbeing and health equity)?

Demonstrate impact by responding to the [Quintuple aim](#), supported by appropriate data.

(Response must not exceed 1000 words)

Criteria 4

What are your next steps towards further strengthening this initiative (e.g. sustaining or scaling) such that it reaches the people most in need?

(Response must not exceed 400 words)

Submission Guidelines

After reviewing the awards criteria in this document, applicants may choose to submit their application in one of the following formats:

- **Written submission:** [Submission Form](#) completed and submitted via email at APHNhealthequityawards@adelaidephn.com.au
- **Video submission:** A recorded response addressing each of the four questions. The video must not be longer than 25 minutes.

If you wish to submit a video application, please contact the team at APHNhealthequityawards@adelaidephn.com.au prior to submission. The team will provide further instructions regarding format and submission requirements.

If you are submitting a written application, please complete the Submission Form and submit your responses via email at APHNhealthequityawards@adelaidephn.com.au

The Submission Form and Scoring Rubric can be found on our website, [available here.](#)

All the information in your submission will be used for promotional purposes if your entry is successful. This includes promotion through Adelaide PHN's communication channels, including website, social media, and e-newsletters.



Award Winner Videos

All award winners will have the opportunity to work with Adelaide PHN to develop a 90-second video showcasing their achievements. This video will be played to the audience at the awards dinner and made available to the winners for promotional/marketing purposes.

If successful, the winners must be available to work with our Communications team in July for filming and ensure staff and community participation. Filming will be completed on the award winner's premises and is expected to take around 4-5 hours. The Adelaide PHN Communications team will contact the award winners in mid-June to schedule filming.

Usage of Video Footage

Finalists may share the video as it is

As the owner of the video footage, Adelaide PHN retains full ownership rights. Therefore, you agree not to edit or modify the video in any way without our explicit permission. The video must be shared in its original form.

Changes after approval

Once the final version of the video has been approved by Adelaide PHN, you are not allowed to request any further changes. We will make every effort to ensure that the video meets your expectations before obtaining our final approval.

Shelf life of the video

The video produced is intended to be used within the program contract period. If Adelaide PHN withdraws funding from the program at a later period, you are not permitted to use this video for promoting your services.

Raw footage request

If you require access to the raw footage for use in your corporate videos, please notify us and request permission. We will consider your request and provide you with the necessary footage if appropriate.



Key Dates

If you require assistance or more information, please contact Adelaide PHN on aphnhealthequityawards@adelaidephn.com.au.

13 April 2026

Entries are open to submit your case study. Remember to submit your application by the due date.

17 June 2026

All the award recipients will be notified. We will contact the award recipients to schedule dates for filming.

22 August 2026

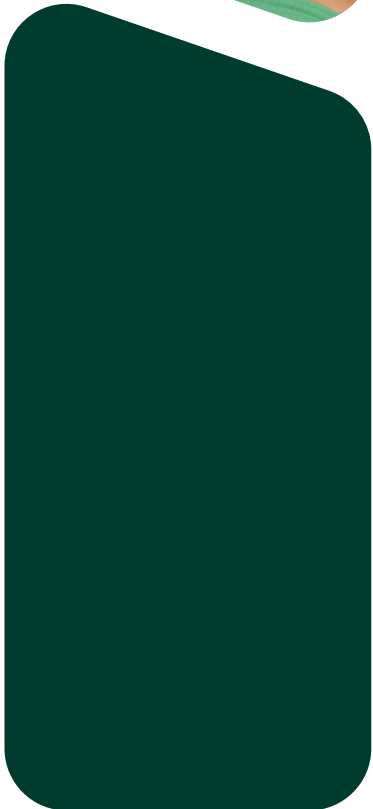
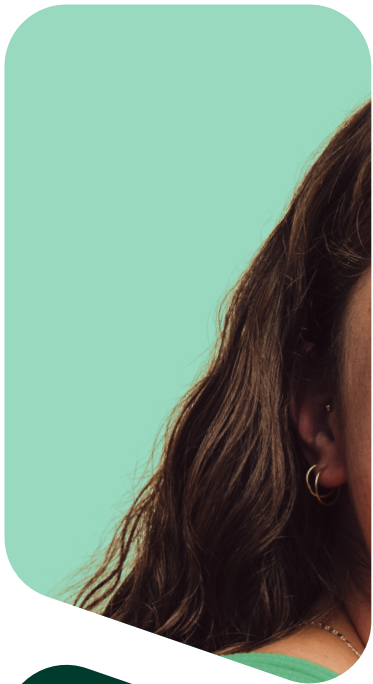
Award recipients announced at the Health Equity Awards 2026 event at the Hotel Grand Chancellor Adelaide.

24 May 2026

Entries are now closed and we will not be accepting any further applications after this date.

Early July 2026

Award recipient video filming will take place in early July as scheduled with award recipients.



Health Equity
Awards 2026

phn
ADELAIDE

An Australian Government Initiative